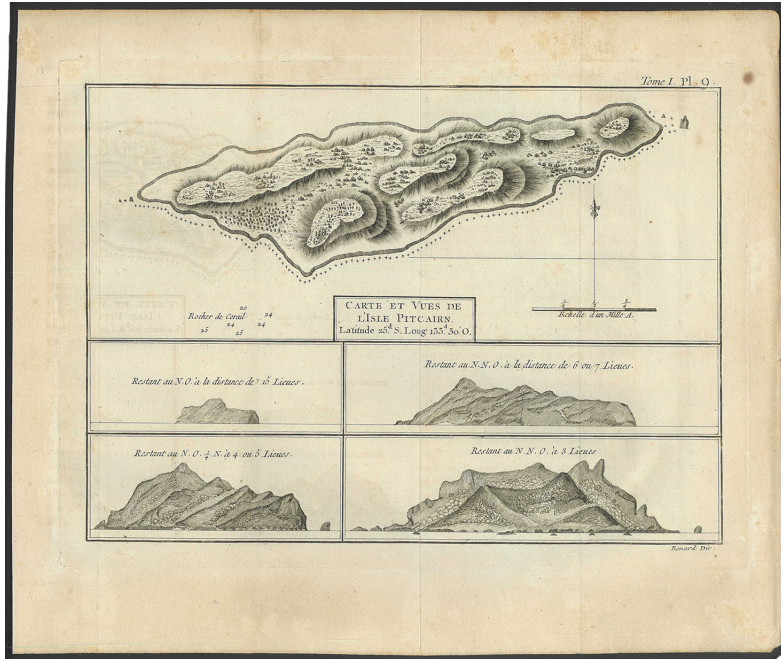


Lot Type Grading Description

Estimate \$A

**PITCAIRN ISLANDS - Postal History**

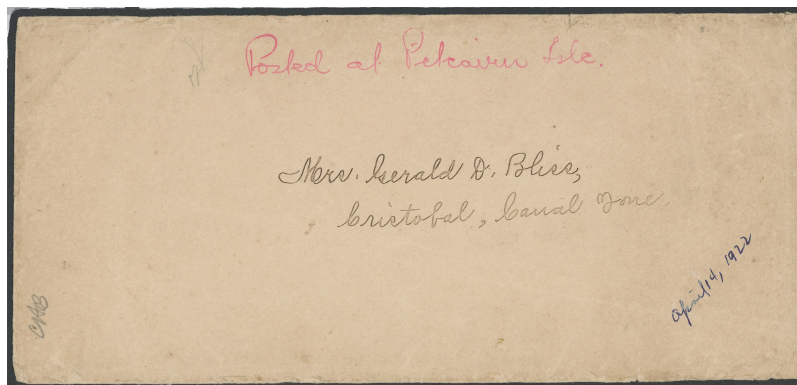
Until a regular mail service commenced in 1920, mail from and to the Pitcairn Islands relied on private carriage by passing ships. David Lume in 'Pitcairn Islands Philately' (2nd Ed; 1999; p3) states "... in June 1921 ... the New Zealand and British governments agreed to accept and deliver unstamped mail from Pitcairn" and various concessional 'No Stamps Available' cachets were introduced. This is the best offering of these cachets for many years. On 15.3.1926, the concession was withdrawn, and mail was required to be franked with New Zealand stamps. On 7.6.1927 an official New Zealand Postal Agency was established on the island. This operated until 14.10.1940, the Crown Colony of Pitcairn Islands issuing its first postage stamps the next day.

**Lot 3813**

3813 D

B

**MAPS & CHARTS:** 1775 (circa) 'Carte et Vues de l'Isle Pitcairn' topographical map & four side elevations (252x181mm) published by Robert Bernard as part of an atlas with 'Tome I Pl.9' inscription at upper-right, ironed-out central fold & a few minor aging marks. The longitude is incorrectly given as '133.30' instead of '133.06'. When the island was discovered by Philip Carteret aboard HMS 'Swallow' in 1767, his ship did not carry a chronometer. This error allowed the Bounty mutineers to remain 'hidden' on Pitcairn for 19 years.

100<sup>T</sup>**Ex Lot 3814**

3814 C

A-

**1922** (April) long cover unfranked to "Mrs Gerald D Bliss, Cristobal, Canal Zone" with manuscript endorsement "Posted at Pitcairn/Isle" in red ink at top enclosing two letters from Richard E Christian Island Secretary (and later Postmaster) one dated "April 14" headed "Dear friends" ordering kerosene, muslin & cotton cloth, the other dated "April 5th" to Mrs Bliss personally ordering thread, minor transmission marks & slightly trimmed at right, the letters with minor folds. Ex Humphrey Norvill.

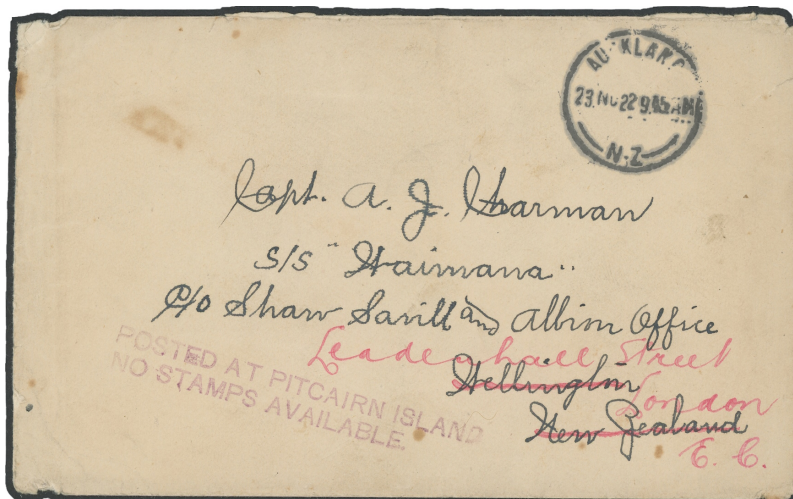
Gerald Bliss was the US Postmaster at Cristobal, Canal Zone, and operated an unofficial clearing station for mail from Pitcairn Island. He and his wife acted as suppliers of basic needs to the islanders, as well as selling their handicrafts. In 1970, some 78 covers (and 143 letters) sent to the Bliss family were discovered in Florida, most of which have ended up in institutions. It appears from the Bliss correspondence that mail lodged shortly before the departure of a ship would not receive a 'No Stamps Available' cachet, but rather a manuscript endorsement. **(cover + 2 letters)**

2,000<sup>T</sup>

## PITCAIRN ISLANDS - Postal History (continued)

Lot Type Grading Description

Estimate \$A



## Lot 3815

- 3815** C B - (late) cover unfranked to "Capt AJ Charman, S/S Waimana, c/o Shaw Savill and Albion Office, Wellington, New Zealand" with a very fine complete strike of the 'POSTED AT PITCAIRN ISLAND/NO STAMPS AVAILABLE' cachet SG C2 (70x8mm; Cat £2750 on cover) in violet at lower-left, Auckland '23NO22' transit cds on face and Wellington 'LETTER CARRIERS/27NO22' arrival backstamp, re-directed to the shipping line's London office, a few mostly minor edge faults & a couple of small aging marks. *Ex Humphrey Norvill*. See also Lot 3817 below for an example of this cachet in black (unlisted). A similar example on a cover to the Canal Zone sold at a London auction in 2005 for £1680.

Referring to mail from the 1921-26 postal concession period, the *Humphrey Norvill* catalogue (26.11.1999) states that "it is estimated from the published work of Carriker and Field that there are less than 30 covers in private hands". That sale contained nine such items (or eleven if the two covers with manuscript endorsements are included). In 2005, ten such items from the *Bliss* correspondence were offered (four of which were with manuscript endorsements). The *James Brill* collection sold in 2010 included only four items (plus a piece & a 1929 *Iremonger* cover). The *David Murray Brown* collection features 16 items from this period - including the manuscript endorsement in the previous lot - comprising six *ex Norvill* & two *ex Brill* as well as eight items not previously offered there.

2,000<sup>T</sup>

## Lot 3816

- 3816** Δ B **1923** (early) large-part parcel wrapper (235x120mm) unfranked to "Capt JJ Cameron, RMS Remuera, c/- New Zealand Shipping Co Ltd, Wellington, New Zealand" with a largely very fine complete strike of the 'Posted at Pitcairn/Island no stamps/available' cachet SG C4a (73½x22mm; Cat £2750 on cover; **the only recorded example**) in red at lower-right, Wellington '25FE23' arrival cds on face, re-directed to the shipping line's London office with violet handstamp alongside, minor folds & blemishes largely clear of the markings. *Ex Humphrey Norvill* where it was described as "believed to be **the only known example of the semi-official cachet period for use on a parcel**" [our emphasis], and we do not know of any other.

The RMS 'Remuera' was a passenger liner which called 2-3 times per year at Pitcairn during the 1920s sailing between Southampton & Auckland, New Zealand. In June 1923 the ship brought a supply of galvanised iron roofing to Pitcairn: see also Lot 3818 below.

2,000<sup>T</sup>

## PITCAIRN ISLANDS - Postal History (continued)

Lot Type Grading Description

Estimate \$A



Lot 3817

3817 C

B

- (mid) cover unfranked to England with a very fine complete strike of the 'POSTED AT PITCAIRN ISLAND/NO STAMPS AVAILABLE' cachet SG C2 (70x8mm; Cat £2750 on cover) in black (**unrecorded colour**) at upper-right, Auckland '13AU23' transit backstamp, on arrival apparently incorrectly taxed with '3D/TO PAY/75' handstamp for double deficiency and Great Britain Postage Dues 3d violet affixed on the face tied by 'MARYPORT/28 SP/23' cds, a few mostly minor edge faults & a couple of small aging marks. See also Lot 3815 above for an example of this cachet in violet. A similar marking in violet on a cover to the Canal Zone sold at a London auction in 2005 for £1680.

The postal concession provided for only the postage payable to be charged, not the 'double deficiency' usually charged for unfranked mail. The British Empire letter rate at this time was 1½d for the first 1oz, 2d up to 3ozs then ½d per additional 1oz. The 3d charged equates to postage for an item weighing between 4-5ozs, which seems highly unlikely. Much more likely is that the item weighed 1oz or less, making this an instance of **incorrect double deficiency charged on a postal concession item**.

2,000<sup>T</sup>

Lot 3818

3818 C

A-

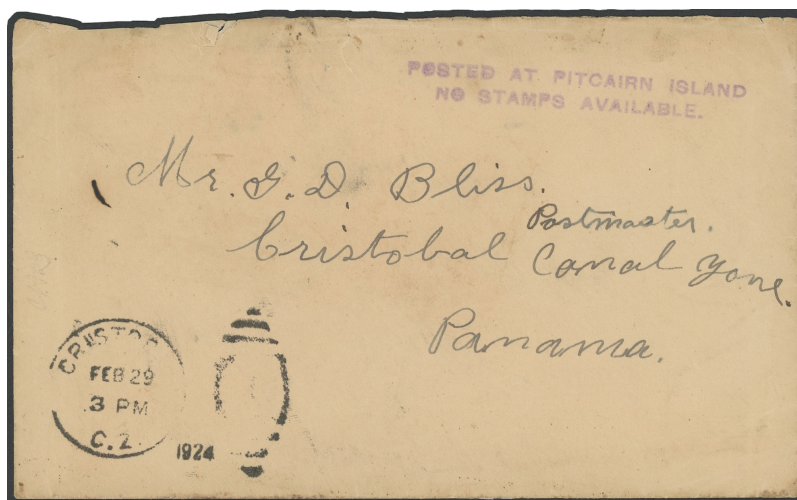
- (mid) 'R.M.S. REMUERA' envelope unfranked to "Mr Warren, Ship's Writer, RMS Remuera, c/- New Zealand Shipping Co Ltd" England with a very fine complete strike of the italicised 'POSTED AT PITCAIRN ISLAND/NO STAMPS AVAILABLE' cachet SG C8 (70x9mm; Cat £1900 on cover) in violet at upper-right, carried via the Canal Zone with 'CRISTOBAL/AUG 18/1923' machine cancel on face, on arrival taxed with '1½D/FB' handstamp for the single rate of surface mail only and Great Britain Postage Dues 1½d brown affixed on face tied by London '3 SP/23' cds, light central fold & a couple of very minor blemishes. A similar marking on a cover to the Canal Zone sold at a London auction in 2005 for £1020.

1,500<sup>T</sup>

## PITCAIRN ISLANDS - Postal History (continued)

Lot Type Grading Description

Estimate \$A



Lot 3819

- 3819** C A- **1924** (Feb) cover unfranked to "Mr GD Bliss, Postmaster, Cristobal, Canal Zone, Panama" with a very fine complete strike of the 'POSTED AT PITCAIRN ISLAND/NO STAMPS AVAILABLE.' cachet SG C11 (63x7mm; Cat £2750 on cover) in violet at upper-right enclosing a letter from *Robert E Christian* dated "Feb 16" enquiring about an order for kerosene which begins "As the RMS Rotoroa go by here tomorrow I am just writing these few lines ...", minor edge faults & a couple of small blemishes, the letter with minor folds. *Ex Humphrey Norvill*. The islanders communicated with passing ships by wireless, which was provided by the *Marconi Company* in August 1921, and the 'Rotorua' called at Pitcairn Island on 17.2.1924. *Robert E Christian* was the great great great grandson of *Fletcher Christian*.

1,500<sup>T</sup>

Lot 3820

- 3820** C A - (Jan/Feb) 'The New Zealand Shipping Company' envelope (flags logo on back flap) unfranked to **Germany** with a largely very fine complete strike of the 'POSTED AT PITCAIRN ISLAND/NO STAMPS AVAILABLE.' cachet SG C11 (63x7mm; Cat £2750 on cover) in violet at upper-right, carried via England with London '17 MR/24' transit cds on face where taxed with 'T' hexagonal handstamp alongside a small circular crossed postal inspector cachet, rated "60" [Pfennig] to pay in blue pencil but unusually no arrival markings, a couple of tiny marks do not detract. A most unusual destination for mail from the islands. Presumably posted by a passenger on a passing liner, the most likely candidates being the RMS 'Ruahine' which called on 7.1.1924 or the RMS 'Rotorua' which called on 17.2.1924, both on their way from Wellington to England.

1,500<sup>T</sup>

PITCAIRN ISLANDS - Postal History (continued)

Lot Type Grading Description

Estimate \$A



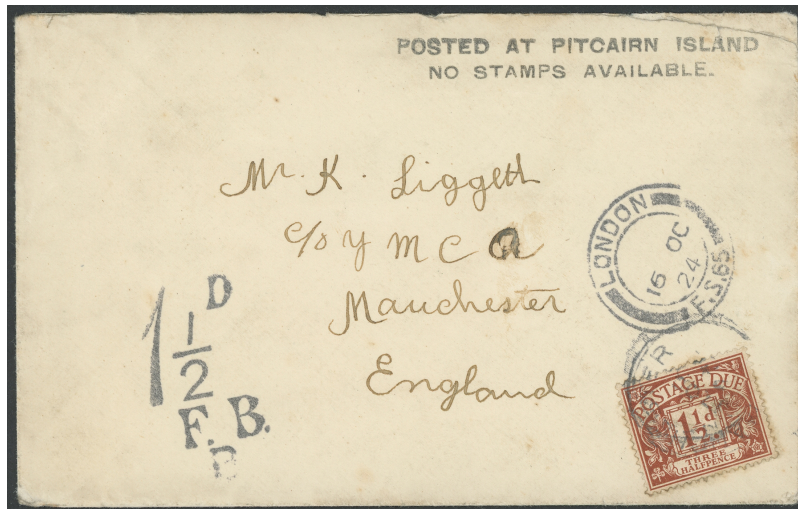
Lot 3821

3821 C

B

- (mid) cover unfranked to England with a largely very fine almost-complete strike of the 'POSTED AT PITCAIRN ISLAND/NO STAMPS AVAILABLE.' cachet SG C3 (49x8½mm; Cat £1800 on cover) in violet at upper-right, 'LONDON F.S/1 AU/24/PAQUEBOT' transit cds on the face where taxed with both a 'T' hexagonal handstamp & '1½d/F.B.' cachet but inexplicably with only a Great Britain Postage Dues 1d red affixed tied by a light Surrey cds of the next day, a few edge faults at top & a couple of minor aging marks. Posted by a passenger on a passing liner, who has written "Not stamping to get Pitcairn mark for you" on the reverse.

1,000<sup>T</sup>



Lot 3822

3822 C

B

- (mid) cover unfranked to England with a very fine to superb complete strike of the 'POSTED AT PITCAIRN ISLAND/NO STAMPS AVAILABLE.' cachet SG C11 (63x7mm; Cat £2500 on cover) in black at upper-right, London '16 OC/24' transit cds on the face where taxed with '1½d/F.B./B' cachet, Great Britain Postage Dues 1½d brown affixed tied by Manchester cds of the next day, minor edge fault at top & some aging marks mostly on the reverse.

1,000<sup>T</sup>

## PITCAIRN ISLANDS - Postal History (continued)

Lot Type Grading Description

Estimate \$A



Lot 3823

- 3823** C A- - (late) Hoague-Spreague Corp, Sales Office, Lynn, Mass (footware manufacturer) envelope unfranked to the USA with a largely very fine complete strike of the 'POSTED IN PITCAIRN ISLAND, 1924' NO STAMPS AVAILABLE' cachet SG C9 (80x11mm; Cat £2250 on cover) in black at upper-right, 'CRISTOBAL C.Z./NOV 8/PAQUEBOT/1924' duplex cancel transit on face, taxed with large 'T' in-circle cachet in red & 'NEW YORK N.Y./GPO - DUE/4/CENTS' 'opera-glasses' marking and USA Postage Dues 2c red pre-cancelled vertical pair affixed all on the face, a couple of very minor blemishes. Ex Humphrey Norvill. A similar marking on a faulty cover to the Canal Zone sold at a London auction in 2005 for £1440.

2,000<sup>T</sup>

Lot 3824

- 3824** C B - (mid) 'The N.Z. Shipping Co Ltd - Federal S.N. Company Ltd' envelope (flags logo on back flap) unfranked to England with a light but largely very fine complete strike of the 'POSTED AT PITCAIRN ISLAND/NO STAMPS AVAILABLE.' cachet SG C5 (47x9mm; Cat £2500 on cover) in violet at upper-right, London '24 NO/24' transit cds on the face where taxed with both a 'T' hexagonal handstamp & '1 1/2d/F.B.' cachet, Great Britain Postage Dues 1/2d green x3 affixed tied by 'BEACONSFIELD/BUCKS' cds of the same day, some aging marks & corner fault at lower-left.

1,500<sup>T</sup>

## PITCAIRN ISLANDS - Postal History (continued)

Lot Type Grading Description

Estimate \$A



Lot 3825

**3825** Δ A- 1925 largely very fine complete strike of the 'POSTED AT PITCAIRN ISLAND/No Stamps Available' cachet SG C5a (50x7mm; Cat £3500 on cover) in violet (**unlisted colour**) on piece with 'WELLINGTON/NZ/-7JA25/LOOSE LETTERS' cds alongside, a couple of very minor aging marks. *BPA Certificate* (2010) "is genuine". *Ex James Brill*; sold for £460. See also Lot 3827 below for an example on cover front.

500<sup>T</sup>

Lot 3826

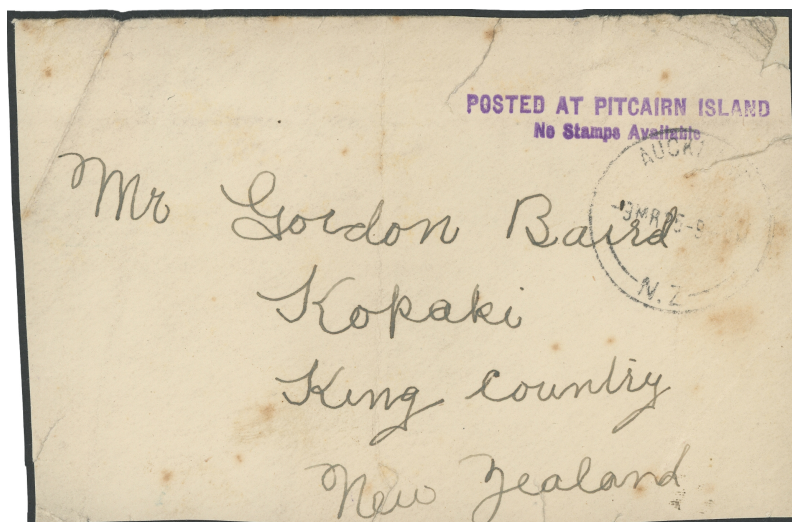
**3826** C B - (early) cover unfranked to Scotland with a very fine complete strike of the italicised 'POSTED AT PITCAIRN ISLAND/NO STAMPS AVAILABLE' cachet SG C8 (70x9mm; Cat £1900 on cover) in violet at upper right, London '23 FE/25' transit cds on the face where taxed with both a 'T' hexagonal handstamp & '1½d/F.B./D' cachet, Great Britain Postage Dues 1½d brown affixed tied by somewhat untidy Glasgow cds of the next day, a few edge faults at top slightly affecting the cachet & a few transmission marks. A similar marking in black on a cover to the Canal Zone sold at a London auction in 2005 for £1020.

1,000<sup>T</sup>

## PITCAIRN ISLANDS - Postal History (continued)

Lot Type Grading Description

Estimate \$A



Lot 3827

**3827** C B - (early) large-part cover front unfranked to New Zealand with a very fine to superb complete strike of the 'POSTED AT PITCAIRN ISLAND/No Stamps Available' cachet SG C5a (50x7mm; Cat £3500 on cover) in violet (**unlisted colour**), light 'AUCKLAND/9MR/25/NZ' transit cds just over the last word of the cachet, repaired/re-inforced edge tears & some minor aging marks not affecting the cachet. A small piece with a lesser strike of the cachet *ex James Brill* sold for £460: see Lot 3825 above.

1,000<sup>T</sup>

Lot 3828

**3828** C B - (mid) cover unfranked to Ireland with a very fine to superb complete strike of the 'POSTED IN PITCAIRN/NO STAMPS AVAILABLE.' cachet SG C1 (62x8mm; Cat £3250 on cover) in black at upper-right, London '2 AU/25' transit cds on the face where taxed with '1 1/2d/F.B.' cachet, the postage due apparently not collected, small closed edge tear at top, minor folds just clear of the handstamp & a little light soiling. *Ex James Brill* sold for £1783.

2,500<sup>T</sup>



## PITCAIRN ISLANDS - Postal History (continued)

Lot Type Grading Description

Estimate \$A



## Lot 3829

3829 C

A-

1926 (early) *White Star Line* envelope (red flag logo on reverse) unfranked to New Zealand unusually with **two** largely very fine complete strikes of the 'POSTED AT PITCAIRN/NO STAMPS AVAILABLE' cachet SG C10a (36x8½mm; Cat £2250 on cover) in black one at upper-right and the other inverted at upper-left (probably struck first & the error noticed), Auckland '21JA25' transit cds on the face where taxed with 'TO PAY/1d/DOUBLE DEFICIENT POSTAGE' cachet, New Zealand Postage Dues 1d red & green affixed tied by 'HAWERA/NZ' cds of the next day, small part back flap missing & small paper clip rust mark on face clear of the markings. *Ex Humphrey Norvill.*

The letter rate between Pitcairn Island and New Zealand was 1d per 1oz and the item has been charged a single rate of postage under the concession, notwithstanding the NZ 'Double Deficient Postage' marking (all tax markings on hand at that time being inscribed in this manner). The postal concession was officially withdrawn on 15.3.1926, after which mail was to be prepaid using New Zealand stamps supplied to the island. From 12.5.1926, unstamped letters were subject to standard 'double deficiency' postage due charges.

2,000<sup>T</sup>

## Lot 3830

3830 C

A-

1929 (Oct 25) *Iremonger* to England with largely very fine strike of the 'POSTED IN PITCAIRN/NO STAMPS AVAILABLE' cachet SG C7a (66x10mm; Cat £2250 on cover) in black at upper-right, then New Zealand KGV 1d Admiral affixed over part of the handstamp tied by 'PITCAIRN ISLAND/N.Z. POSTAL AGENCY' cds to pay the printed matter rate postage (flap unsealed), a couple of minor blemishes. The postal concession was withdrawn in 1926, so this is a late out-of-period usage of the handstamp. This may have been applied at *Iremonger's* request, or is possibly an instance of an envelope with the handstamp already applied being used-up.

500<sup>T</sup>

**PITCAIRN ISLANDS - Postal History (continued)**

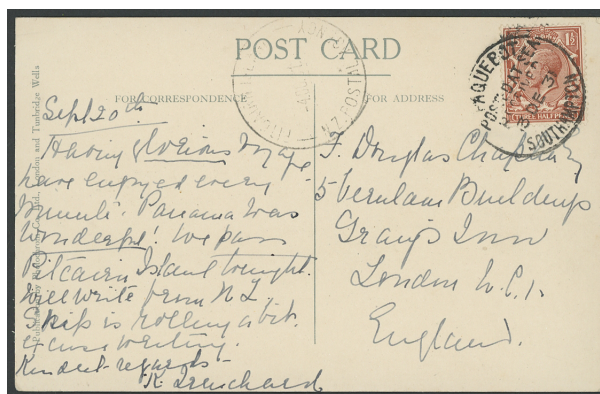
Lot Type Grading Description Estimate \$A



**Lot 3831**

**3831** C A- **1930** (Dec 12) envelope with *Frank A Cook, Importer, Christchurch* embossed on the back flap, to "Mr FJ Tattle, **Norfolk Island**" with New Zealand KGV 1d Admiral tied by a very fine complete strike of the 'PITCAIRN ISLAND/N.Z. POSTAL AGENCY' cds, two very fine to superb 'NORFOLK ISLAND/5FE31/ AUSTRALIA' arrival backstamps, a light fold clear of the stamp slightly affects the arrival cds & a couple of minor blemishes mostly on the reverse. Very scarce inter-island mail: *Fred Tattle* was a Christchurch car dealer who migrated to Norfolk Island in 1930 to grow bananas. *Ex James Brill*; sold for £437.

500<sup>T</sup>



**Lot 3832**

**3832** C A **1931** (Sept/Oct) *New Zealand Shipping Co MV 'Rangitiki'* postcard to England with the message reading in part " Sept 20th ... We pass Pitcairn Island tonight. Will write from NZ ...", posted on board ship with Great Britain KGV 1½d brown and off-loaded at Pitcairn with a light but legible complete strike of the 'PITCAIRN ISLAND/-4OC31/N.Z. POSTAL AGENCY' cds alongside on the face, picked up by another ship and the adhesive tied by largely very fine 'PAQUEBOT/POSTED AT SEA/RECEIVED/13DE31/SOUTHAMPTON' cds, a couple of trivial blemishes. A lovely example of trans-shipment at Pitcairn: see also Lot 3834 below.

300<sup>T</sup>



**Lot 3833**

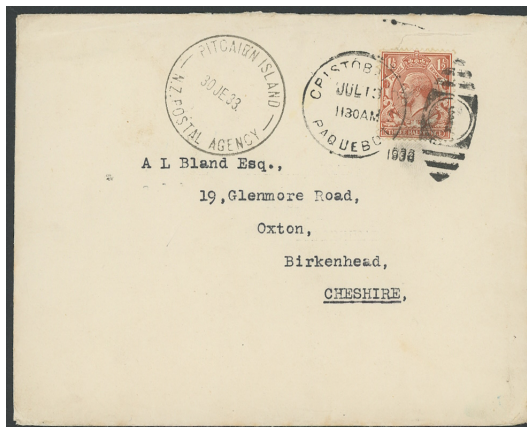
**3833** CL A- **1932** (Nov 23) slightly over-size (183x127mm) apparently home-made brown paper envelope to "Mr Gerald Bliss, Postmaster, **Canal Zone**" with New Zealand KGV 2d yellow tied by a largely very fine complete strike of the 'PITCAIRN ISLAND/N.Z. POSTAL AGENCY' cds, 'CRISTOBAL/DEC 8/1932/CANAL ZONE' machine arrival backstamp, a couple of minor blemishes. *Gerald Bliss* and his wife had operated an unofficial mail clearing facility for the island prior to the NZ Postal Agency: see Lots 3814 & 3819 above). *Ex James Brill*; sold for £276.

300<sup>T</sup>

## PITCAIRN ISLANDS - Postal History (continued)

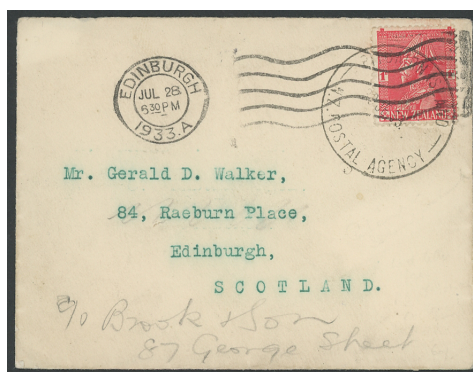
Lot Type Grading Description

Estimate \$A



## Lot 3834

- 3834** C A- 1933 (June 30) *White Star Line* envelope (red flag logo on back flap) to England posted on board ship with Great Britain KGV 1½d brown and off-loaded at Pitcairn with a very fine complete strike of the 'PITCAIRN ISLAND/N.Z. POSTAL AGENCY' cds alongside on the face, picked up by another ship and the adhesive tied by largely very fine 'CRISTOBAL C.Z./JUL 13/PAQUEBOT/1933' duplex cancel, a couple of minor blemishes. Another lovely example of trans-shipment at Pitcairn: see also Lot 3832 above.

400<sup>T</sup>

## Ex Lot 3835

- 3835** C A - (June 20) cover to Scotland with New Zealand KGV 1d Admiral tied by a light but clear complete strike of the 'PITCAIRN ISLAND/N.Z. POSTAL AGENCY' cds, re-directed with Edinburgh 'JUL 28' machine cancel on face, with the enclosed letter from *Richard Edgar Christian* signed by him & reading in part "Your address envelope to hand and I am tending to it so as to go by next mail leaving the island ...". The RMS 'Tamaroa' called at Pitcairn from New Zealand bound for London on 1.7.1933. (2 items)

200<sup>T</sup>

## Lot 3836

- 3836** C A- 1937 (May 12) hand-illustrated 'Rose' cover inscribed "Pitcairn Island" with New Zealand Coronation 1d red tied by a largely very fine complete strike of the 'PITCAIRN ISLAND/12MY37/N.Z. POSTAL AGENCY' cds [Coronation Day; **one day prior to issue in New Zealand**], a couple of tiny aging marks, plus a hand-written 1938 letter from Postmaster *Roy P Clark* (signature) which reads in part " ... These Coronation covers from Pit. should be valuable, for there were not more than 100 issued on the 12th of May 1937". Similar to the cover illustrated in *Pitcairn Log* (Vol.29, No.3 July-Sept 2002 p6) where it states "One of an estimated 22 covers prepared ... It was not previously thought the New Zealand coronation stamp was on Pitcairn on May 12, 1937. The stamp was not issued in New Zealand until May 13, 1937". A most unusual 'First Day Cover'.

200<sup>T</sup>

**PITCAIRN ISLANDS - Postal History (continued)**

Lot Type Grading Description Estimate \$A



**Lot 3837**

**3837** C A- **1939** (May 25) *The NZ Shipping Co - Federal S.N. Company Ltd* envelope (flags logo on back flap) registered to mail-order house "Montgomery Ward, Chicago, Ill" USA with New Zealand KGVI 1d red strip of 3 tied by two largely fine complete strikes of the 'PITCAIRN ISLAND/N.Z. POSTAL AGENCY' cds with a very fine to superb strike of the 'PITCAIRN/Radio/Communication/MAY 26 1939/Established over/PITC/ISLAND' radio station cds in blue alongside, New Zealand blue & black/white R label with another strike of the postal cds affixed at lower-left, 'CRISTOBAL C.Z./JUN/13/1939/REGISTERED' transit & Chicago 'JUN/20' arrival backstamps, a couple of pin-holes clear of the stamps & markings otherwise very fine.

300<sup>T</sup>



**Ex Lot 3838**

**3838** C A **1940** (Oct 15) First Day Cover with HMS 'Bounty' cachet autographed *Fred M Christian, Chief Magistrate* at upper left and KGVI 1d Pictorial tied by 'PITCAIRN ISLAND/POST OFFICE' double-ring cds, plus a letter signed by *Richard Edgar Christian* presumably enclosing the FDC. (2)

100<sup>T</sup>



**Lot 3839**

**3839** C A- **1942** (Dec 5) cover from Australia with QM 1d brown & KGVI 1½d green tied by Sydney machine cancel, to "Mr Roy Clark, Pitcairn Island, via Wellington, New Zealand", unusually not censored in Australia but opened in New Zealand and resealed with Wellington 'PC90 ... D.D.A./37' label, no arrival markings; plus 1943 cover addressed to "Mrs Edgar Christian Pitcairn Island c/- Manager of British Navy, Control Service, Balboar [sic], Panama, Canal Zone" with KGVI 2½d red (corner fault) tied by Melbourne machine cancel where censored with resealing label & cachet; both with minor blemishes. (2)

200<sup>T</sup>



**Lot 3840**

**3840** C A/A- **1942-45** three inwards censored covers, one from the USA with Overrun Countries 5c Greece solo and '61357' clear resealing tape, and two from New Zealand each with Pictorials 2d Hut solos and 'PC 90' or 'Opened by Censor ...' resealing labels, all with fine to very fine 'PITCAIRN ISLAND/POST OFFICE' cds arrivals on face, a couple with minor blemishes. (3)

150<sup>T</sup>

## PITCAIRN ISLANDS - Postal History (continued)

Lot Type Grading Description

Estimate \$A



Lot 3841

- 3841** C A **1943** (March) stampless New Zealand *National Patriotic Fund Board* 'Soldier Sailor Airman' envelope **from Norfolk Island** with "50665 Sgt WH Campbell" return address and largely very fine strike of 'N.Z.E.F./FIELD/POST OFFICE' undated handstamp in blue (*Proud D1*; no dates recorded; rated 1750pts), 'CENSORED/Signature' handstamp in blue signed "Wm Ansell Lt" at lower-left, to "Mrs FP Ward, Pitcairn Island" with very fine to superb complete strike of 'PITCAIRN ISLAND/23.MAR.43/POST OFFICE' cds arrival on face, a couple of trivial transmission marks. The 'NZEF' marking is a generic one used at a number of different locations, but Army records confirm that both Sgt WH Campbell and Lt Ansell were part of the New Zealand Forces on Norfolk Island in 1943, which were engaged primarily in the construction & maintenance of its airfield. A marvellous 'inter-island' usage.

500<sup>T</sup>

Lot 3842

- 3842** C A- **1944** (July 7) *Shaw Savill Line* envelope (logo on back flap) to "Frederiksted, St Croix, Virgin Islands, USA" with KGVI Pictorials 3d Map tied by largely very fine complete 'PITCAIRN ISLAND/POST OFFICE' double-ring cds, censored & re-sealed with 'OPENED BY EXAMINER/PITCAIRN ISLAND ["initials"]' complete typed label (an early example of the very few recorded), re-directed on arrival with 'FREDERIKSTED/NOV 2/1944/V.I. - 1' duplex cancel backstamp and 'CHRISTIANSTED, ST. CROIX, V.I.' handstamp in violet on face, a few mostly minor aging marks. A rarity of WWII censorship mail, the label is recorded by *John Little* between 27.7.1944 and 9.8.1944 only. The initials are those of *Lieutenant Shepherd*, who operated the one-man radio listening post established on the island by the New Zealand Forces.

1,000<sup>T</sup>

Lot 3843

- 3843** C A- **1946** (April 23) *Roy P Clark* envelope to Austria with KGVI Pictorials 3d Map tied by largely very fine complete 'PITCAIRN ISLAND/POST OFFICE' double-ring cds, censored on arrival with Allied post-war cachet in violet and brown re-sealing tape on face, slightly trimmed at right. A scarce destination from the island.

100<sup>T</sup>

**PITCAIRN ISLANDS - Postal History (continued)**

Lot Type Grading Description Estimate \$A



**Lot 3844**

**3844** C A- **1950** (circa) usage of an illustrated envelope with line-drawing captioned "New School", to USA with KGVI Pictorials 4d Bounty Bible solo tied by slightly indistinct 'PITCAIRN ISLAND' double-ring cds, "Floyd H McCoy/ Pitcairn Island/SPO" [South Pacific Ocean] return address handstamp on reverse, a couple of tiny marks.

100



**Ex Lot 3845**

**3845** PS A/A- **1967-72** formular aerogrammes to USA with QEII Pictorials overprints or Pictorials frankings at 6c 8c or 10c rates, the first an *Apsley* airletter carried via the Canal Zone with 'BALBOA' transit backstamp, two New Zealand *Croxley* airletters & two East Africa 'Giraffe' illustrated airletters, all from *Violet McCoy* with lengthy personal messages giving details of life on the island, a couple with minor blemishes. (5)

250